

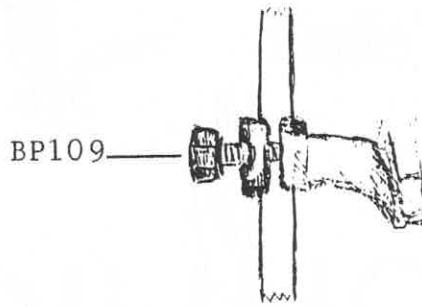
## **70184EH and 70184EHW MAINTENANCE PROCEDURES**

- (1) Sewing machine should be oiled at every oiling point every day, preferably at the beginning of every shift.**
- (2) Use an air hose to blow lint out of the sewing machine. It is best to do this at the beginning of each shift. Lint acts as a wick and absorbs the oil from the parts. Also, when too much lint builds up on parts, it causes the machine to not operate properly.**
- (3) Oil the wheels often; at least once a day.**
- (4) Keep all strings removed from the wheels of the sewing machine and trimmer trolleys. A build up of strings and lint in the wheels causes the wheels to bind. It will also put too much pressure on the clutch.**
- (5) Keep all strings, carpet scraps, and lint cleaned out of the railway. A build up of debris in the railway may cause the wheels of the trolleys to slide. When the wheels slide it may seem as though the clutch is slipping when, in fact, it is not.**
- (6) The CWG1040-1L gear and the W10-1L gear in the clutch assembly should be greased with a high temperature grease at least one a week. Check these gears at least twice a week, grease them twice a week if needed. Any time you change these gears, be sure you grease them well. When installing new gears, make sure they are properly seated. Only a few thousandths of an inch clearance between the gears is needed. When you change the gears, be sure to check the bushing or bearing in the bottom of the trolley for wear. If either is worn, the clutch shaft wobbles and causes excessive wear on the gears. Make sure that you do not get grease in the clutch. Grease in the clutch will cause the clutch to slip.**

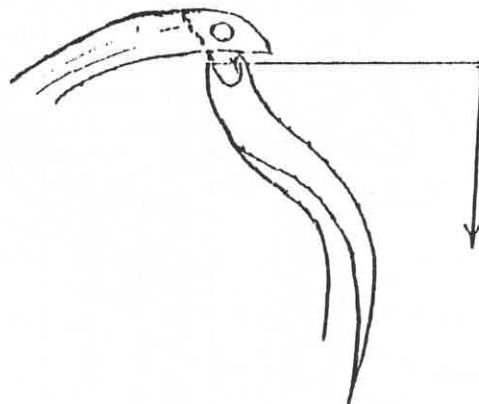
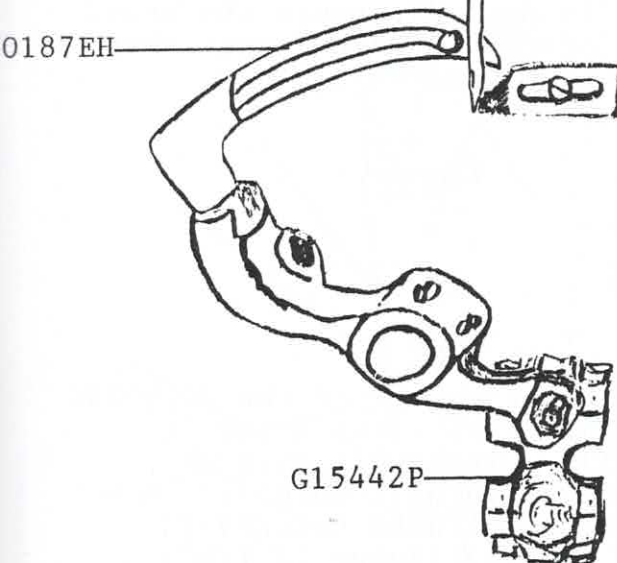
**(7) When using an air motor, check moisture in the moisture collector of the air pack at least once a day. If there is moisture in the collector, wipe the inside of the collector with a dry cloth. If moisture gets into the air motor, the motor will not run properly.**

**(8) Make sure there is oil in the oil container of the air pack. An air motor must have the right amount of oil to run properly. The amount of oil going into the motor is set before the machine is delivered. Do not change the adjustment, but keep the container filled.**

## Adjustments for 70184EHW Butt-seamer for Proper Sewing

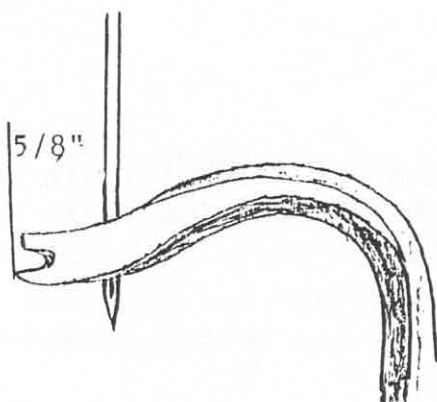


- 1) Loosen BP109 bolt to adjust needle bar up or down as needed.
- 2) Needle point should be even with the bottom of the needle guide.
- 3) Set the needle guide against the back of the needle.
- 4) The 70187EH looper point should be against the needle scarf.
- 5) If needed, to adjust the 70187EH looper, loosen the nut of the G15442P double ball joint. This will allow you to move the stroke of the looper forward or backward to match the needle and the 70190EHW looper.



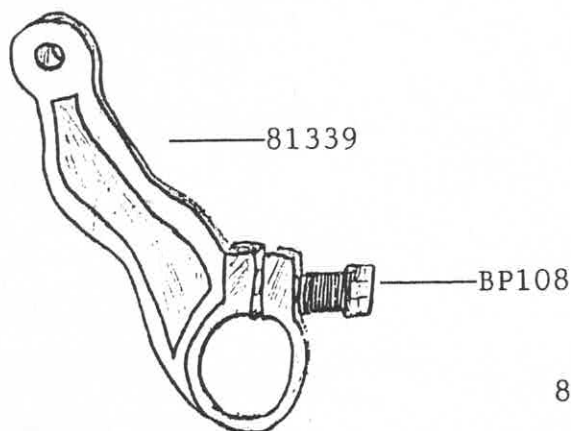
Lower stroke of the looper

Adjustments for 70184EHW Butt-seamer for proper sewing.

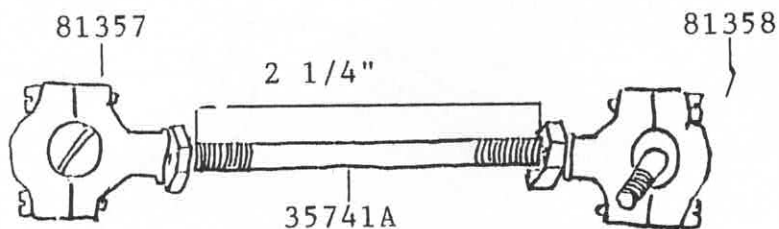


- 6) To adjust the 70190EHW looper, turn the handwheel so that the looper reaches its topmost stroke. At this point, the tip of the looper should be exactly five-eighths of an inch ( $5/8$ " ) from the needle.

- 7) The point of the 70190EHW looper must touch the scarf of the 70187EH looper when they pass each other.



- 8) To adjust the stroke of the 70190EHW loosen the BP108 clamp screw in part 81339. This will move the 81357 and 81358 ball joints. This connection must have exactly two and one quarter inches ( $2 \frac{1}{4}$ " ) space between the nuts on the 35741A rod.





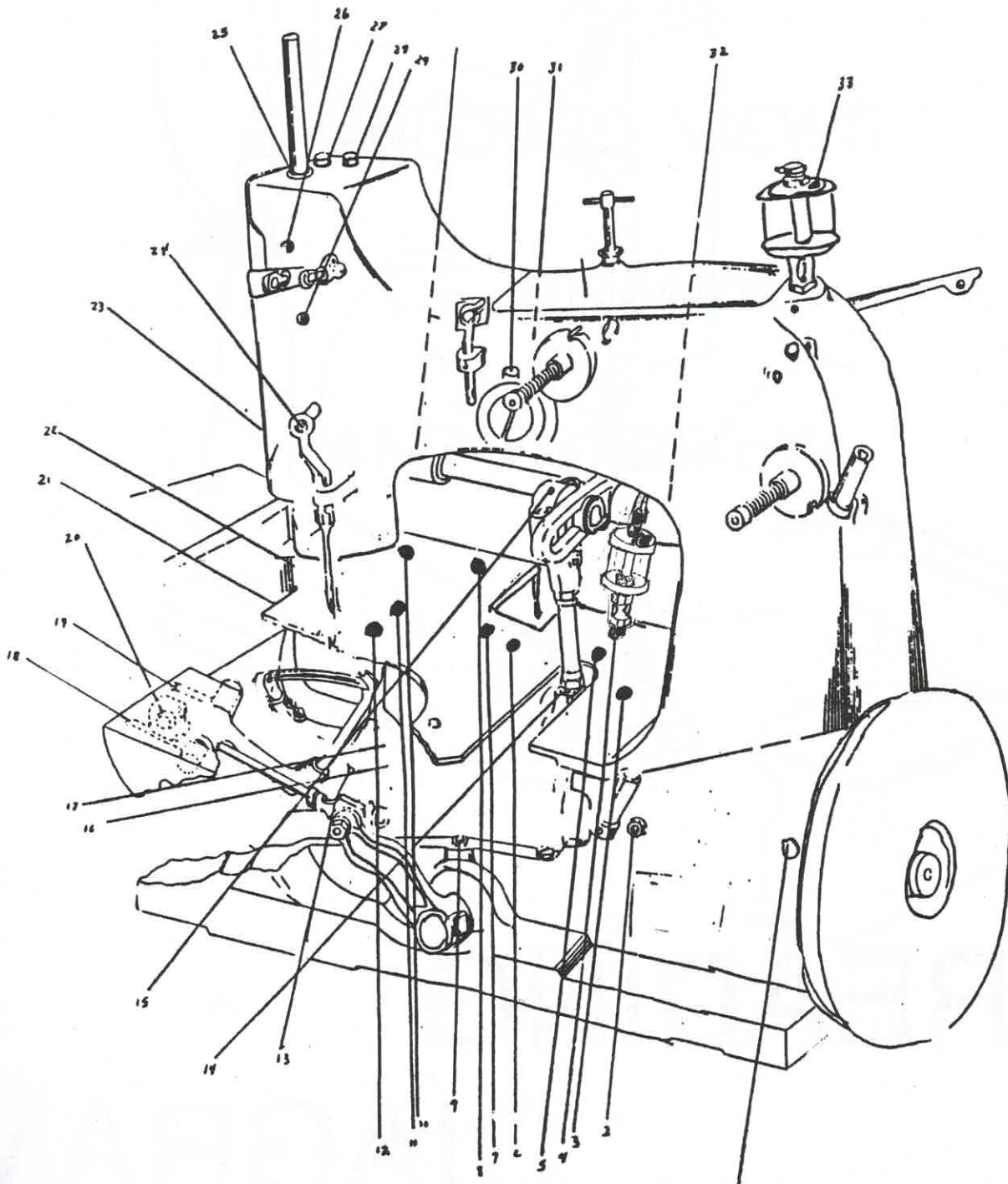


# Eagle Parts & Machinery, Inc.

P.O. Box 1464 • CHATSWORTH, GEORGIA 30705

OFFICE: (706) 695-8637 FAX: (706) 695-0761

## OILING DIAGRAM

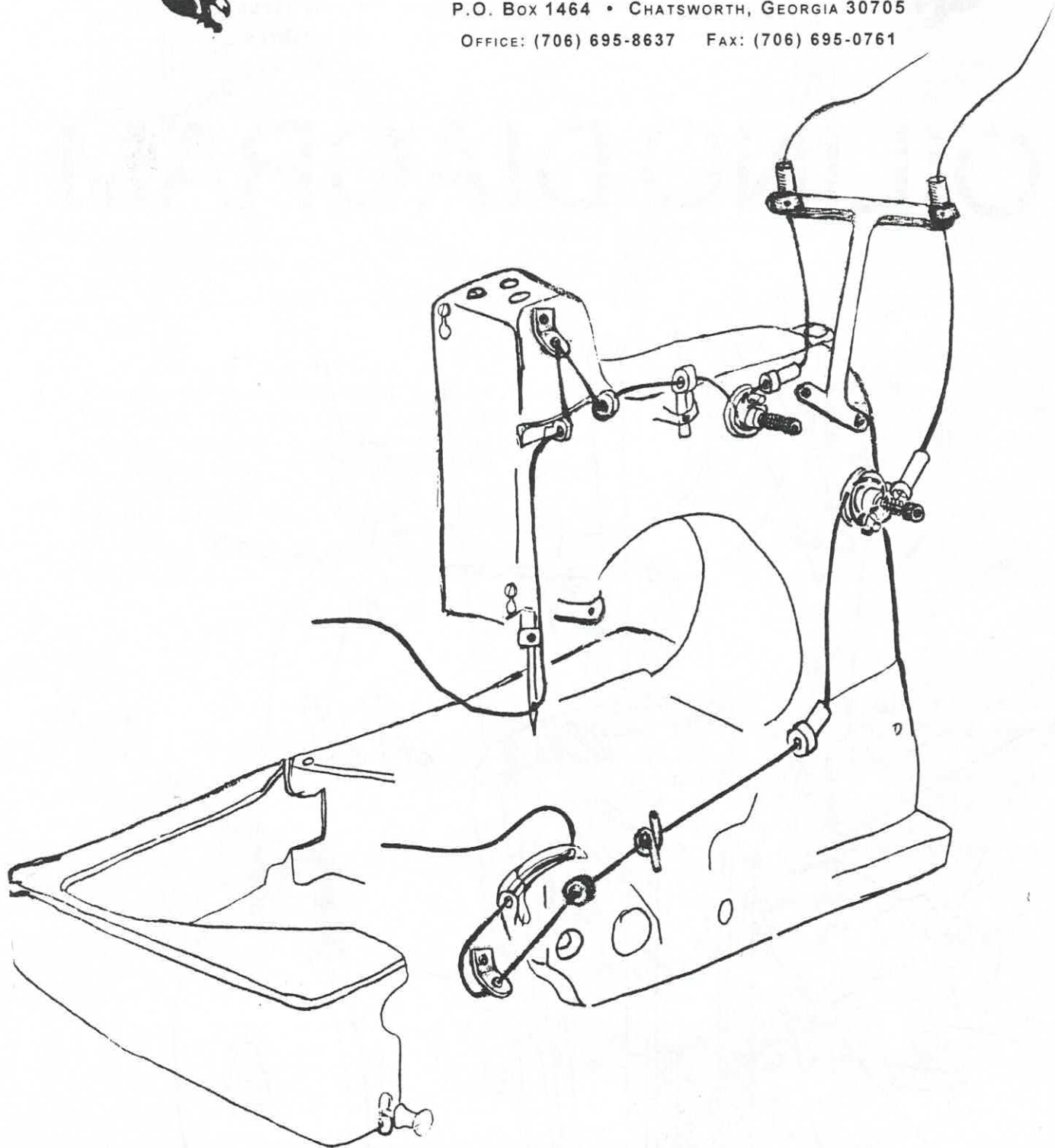




# Eagle Parts & Machinery, Inc.

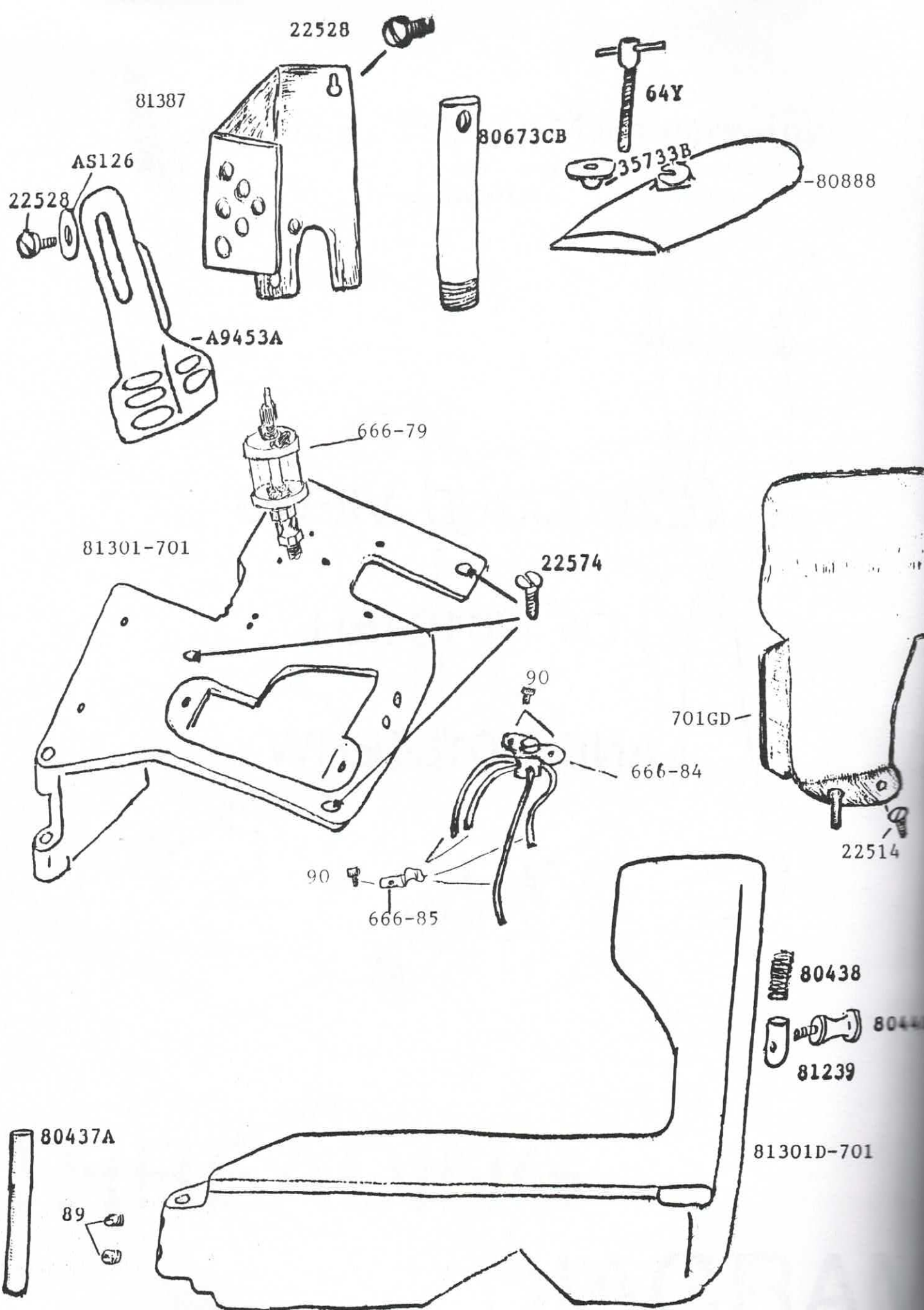
P.O. Box 1464 • CHATSWORTH, GEORGIA 30705

OFFICE: (706) 695-8637 FAX: (706) 695-0761



# THREADING

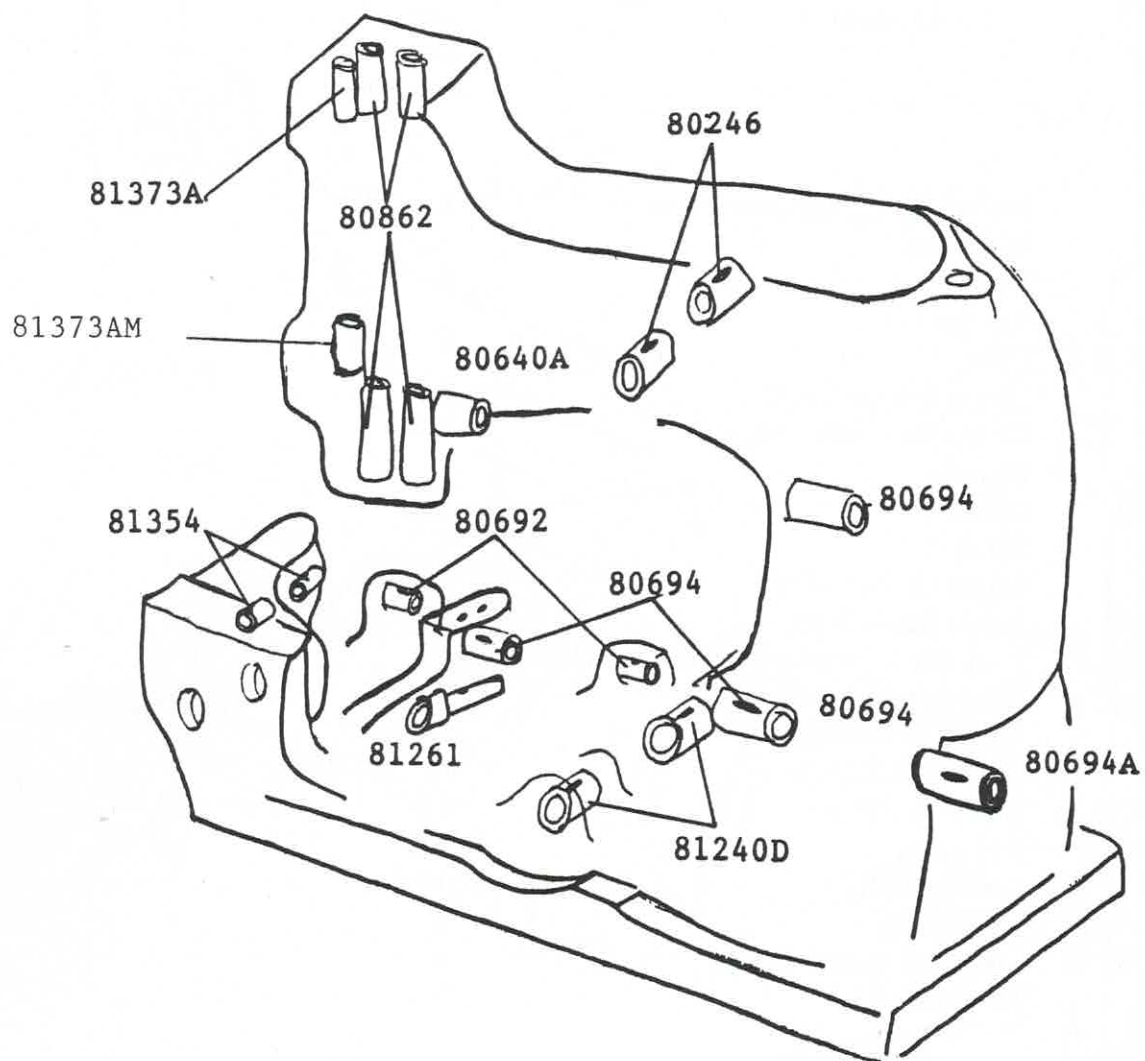
# DIAGRAM



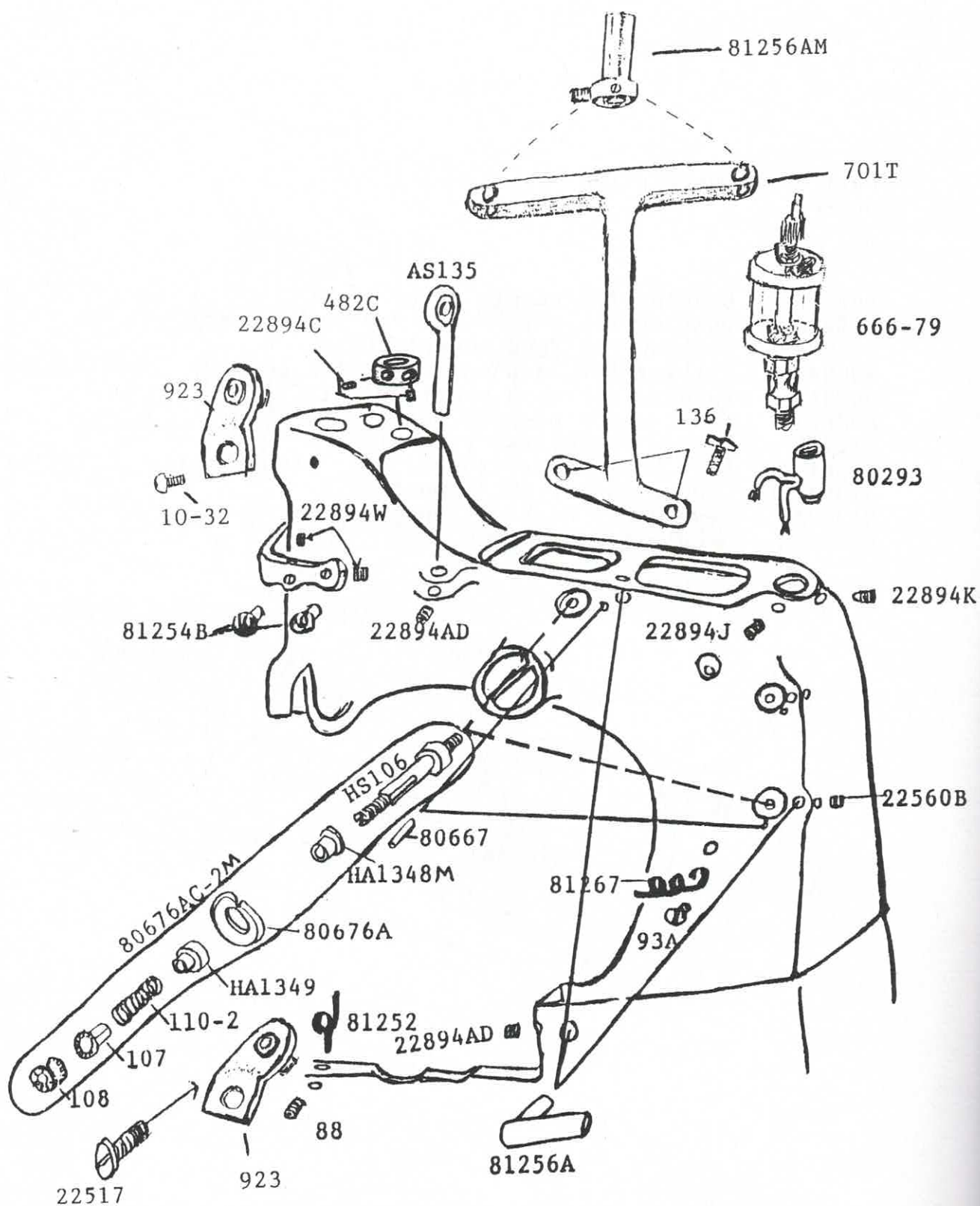
## Cloth Plate and Guards

Part number	Description	Number pieces needed
64Y	Presser spring regulator screw	1
89	Set screw	2
90	Screw	6
AS126	Flat washer	1
666-79	Oiler	1
666-84	Oiling system	1
666-85	Clamp for oiling system	4
701GD	Guard	1
A9453A	Guard	1
22514	Screw	1
22528	Screw for face plate	2
22574	Screw for cloth plate	3
35733B	Lock nut for presser spring regulator screw	1
80437A	Hinge pin for cloth plate	1
80438	Spring for locking bolt	1
80440	Locking bolt knob	1
80673CB	Needle bar guard	1
80888	Top cover	1
81239	Locking bolt	1
81301-701	Cloth plate	1
81301D-701	Swinging extension	1
81387	Face plate	1



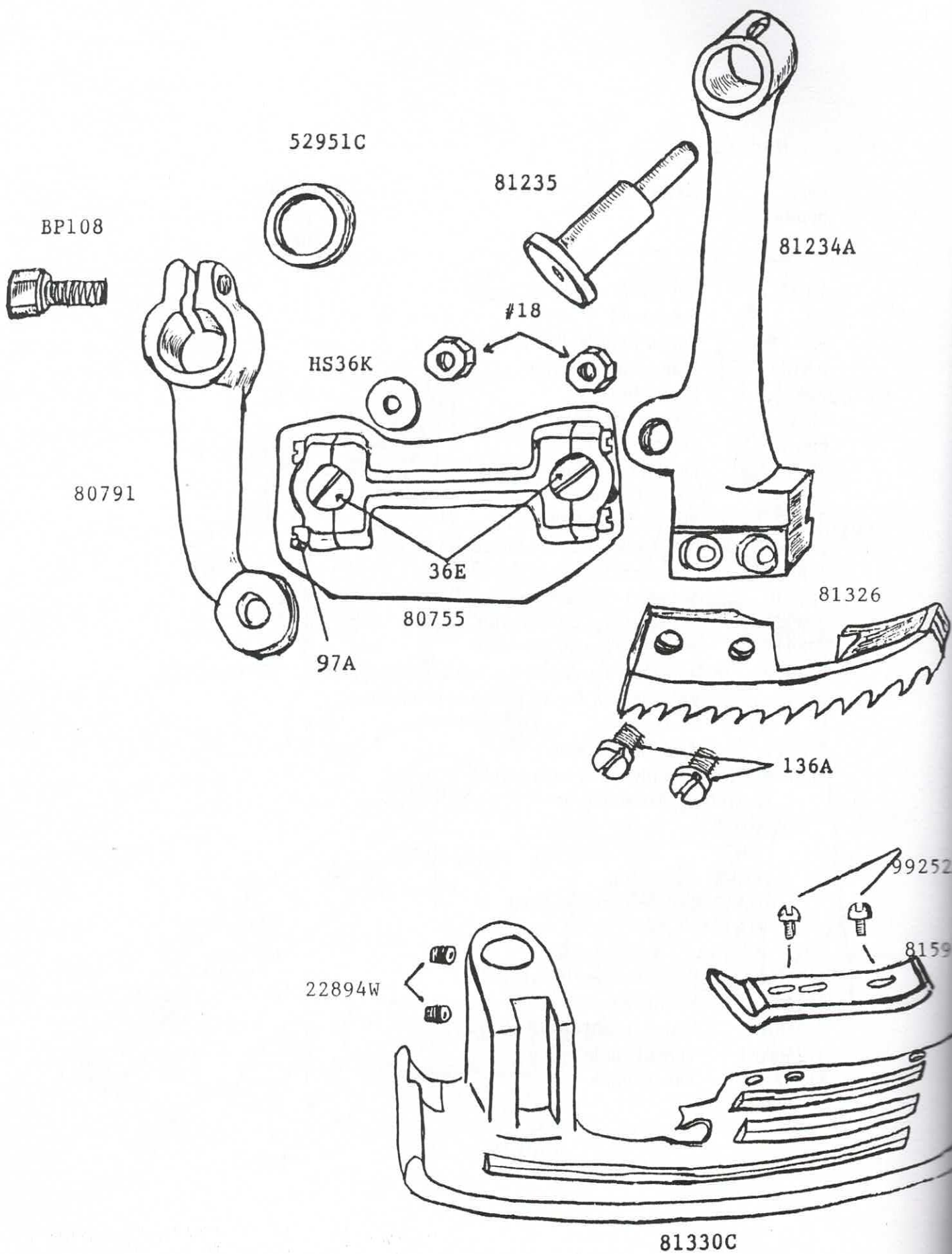


Part number	Description	Number pieces needed
80246	Bushing for needle lever shaft	2
80640A	Bushing for left shaft for upper feed	1
80692	Bushing for feed rocker shaft	2
80694	Bushing for main shaft (left & center)	3
80694A	Bushing for main shaft (right)	1
80862	Bushing for presser bars	4
81240D	Looper rocker shaft bushing	2
81261	Left hand looper rocker cone stud bushing	1
81354	Looper rocker shaft bushing	2
81373A	Needle bar bushing, upper	1
81373AM	Needle bar bushing, lower	1

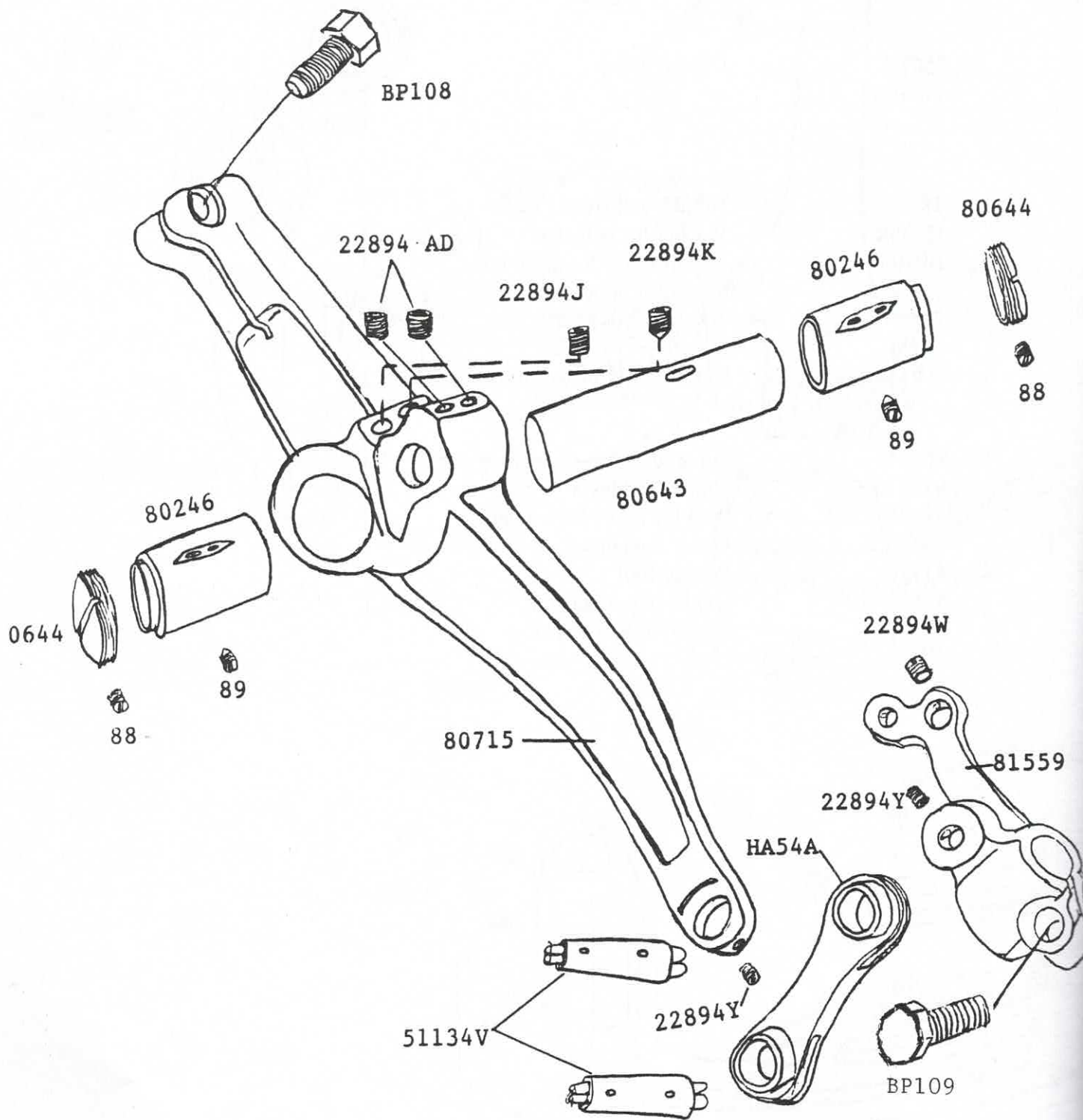


Part number	Description	Number pieces needed
10-32	Set screw	1
88	Set screw	1
93A	Screw for dual thread guide	1
AS135	Frame thread eyelet	1
136	Screw for 701T	2
482C	Presser bar collar	1
666-79	Oiler	1
701T	Dual thread guide	1
923	Thread guide	2
22517	Screw for bottom 923	1
22560B	Set screw for frame thread guide, left	1
22894AD	Set screw for frame thread guide	2
22894C	Set screw for presser bar collar	2
22894J	Set screw for oil reservoir	1
22894K	Set screw for oil reservoir	1
22894W	Set screw for needle bar conn thread eyelet	2
80293	Oil reservoir for needle lever connection rod bearing	1
80667	Tension disc stop pin	2
80676AC2M	Complete tension assembly	2
HS106	Tension post	1
107	Spring ferrule	1
108	Regulating nut	1
110-2	Spring	1
HA1348M	Post ferrule, front	1
HA1349	Post ferrule, rear	1
80676A	Tension disc	1
81252	Frame looper thread guide	1
81254B	Needle bar connection thread eyelet	2
81256A	Frame thread eyelet	1
81256AM	Thread guide eyelet	2
81267	Thread guide	1



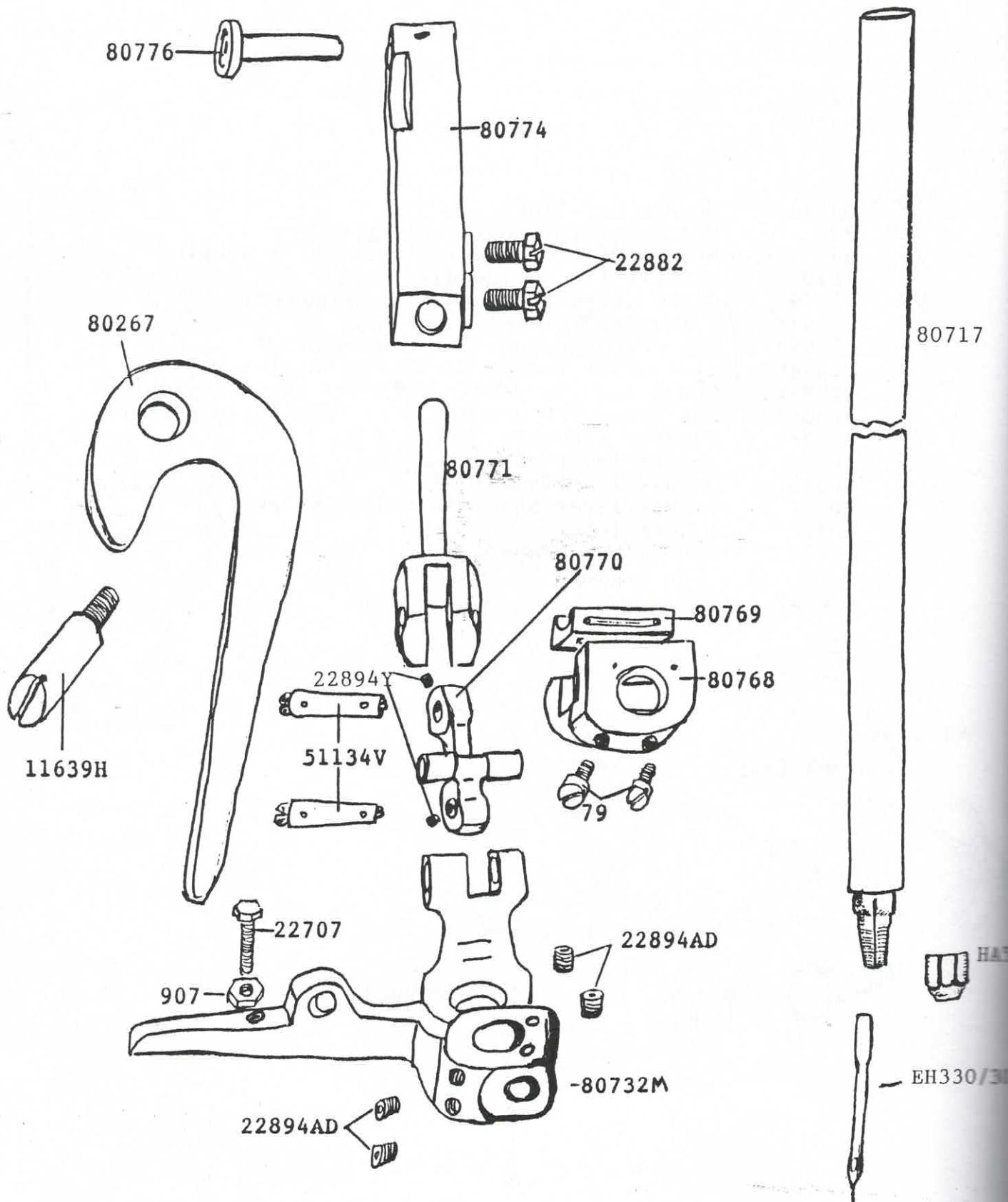


Part number	Description	Number pieces needed
18	Nut for ball studs	2
HS36K	Washer for ball stud	1
BP108	Clamp screw for drive lever	1
136A	Screw for upper feed dog	2
22894W	Set screw for presser foot	2
52951C	Spacer	1
80755	Connecting link assembly complete	1
36E	Ball stud	2
97A	Screw	4
80791	Drive lever for upper feed dog	1
81234A	Upper feed lever	1
81235	Stud for upper feed lever	1
81326	Upper feed dog	1
81330C	Presser foot	1
81597A19	Guide on presser foot	1
99252A	Screw for 81597A19	2

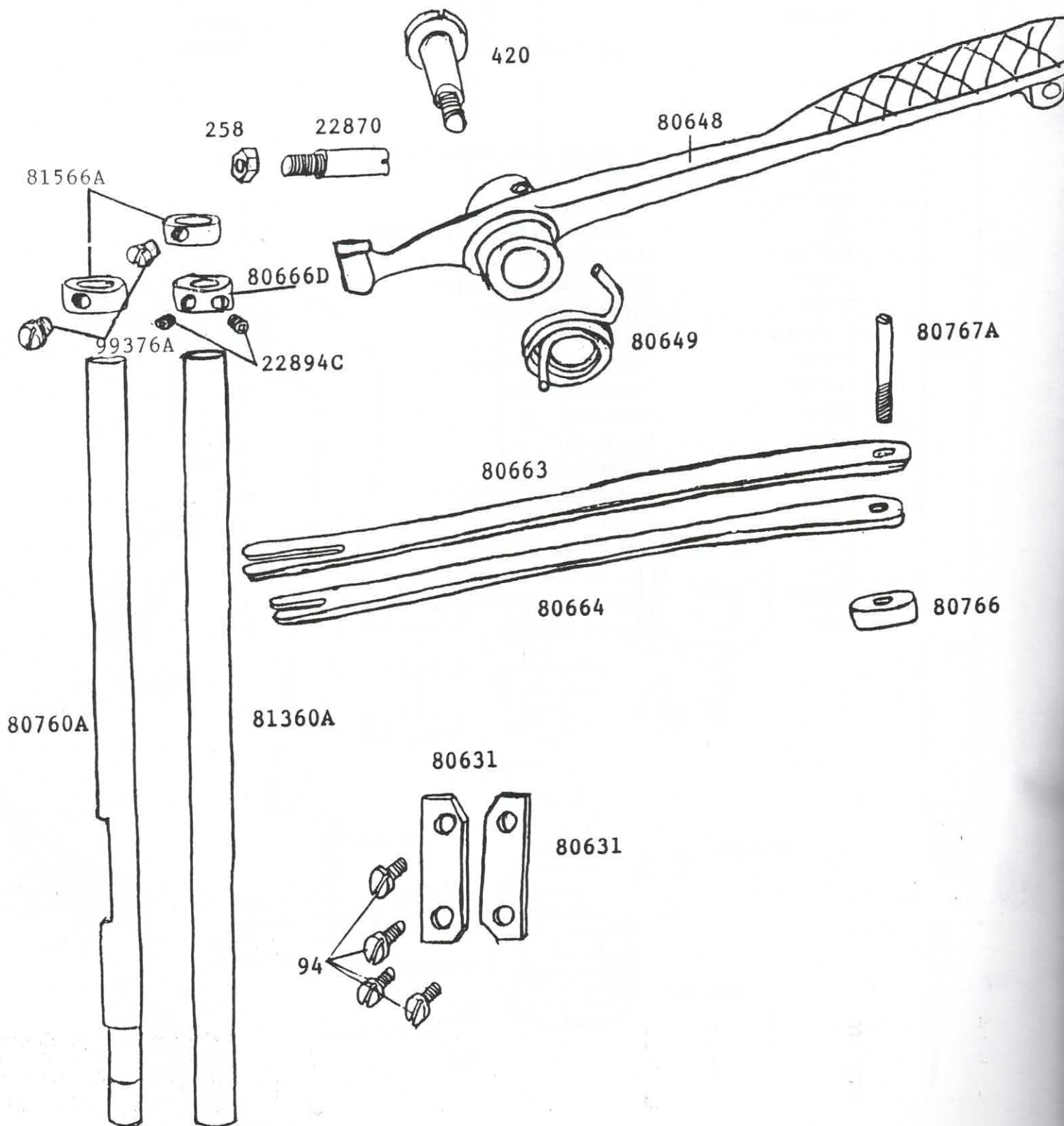


Part number	Description	Number pieces needed
HA54A	Needle bar link	1
88	Set screw for shaft hole plug	2
89	Spot screw for needle lever shaft bearing	2
BP108	Clamp screw for needle lever	1
BP109	Clamp screw for needle bar connection	1
22894AD	Set screw for guide bar stud	2
22894J	Set screw for needle lever shaft	1
22894K	Spot screw for needle lever shaft	1
22894W	Set screw for needle bar conn thread eyelet	1
22894Y	Set screw for needle lever link upper pin	2
51134V	Tapered link pin	2
80246	Needle lever shaft bushing	2
80643	Needle lever shaft	1
80644	Needle lever shaft hole plug screw	2
80715	Needle lever	1
81559	Needle bar connection	1



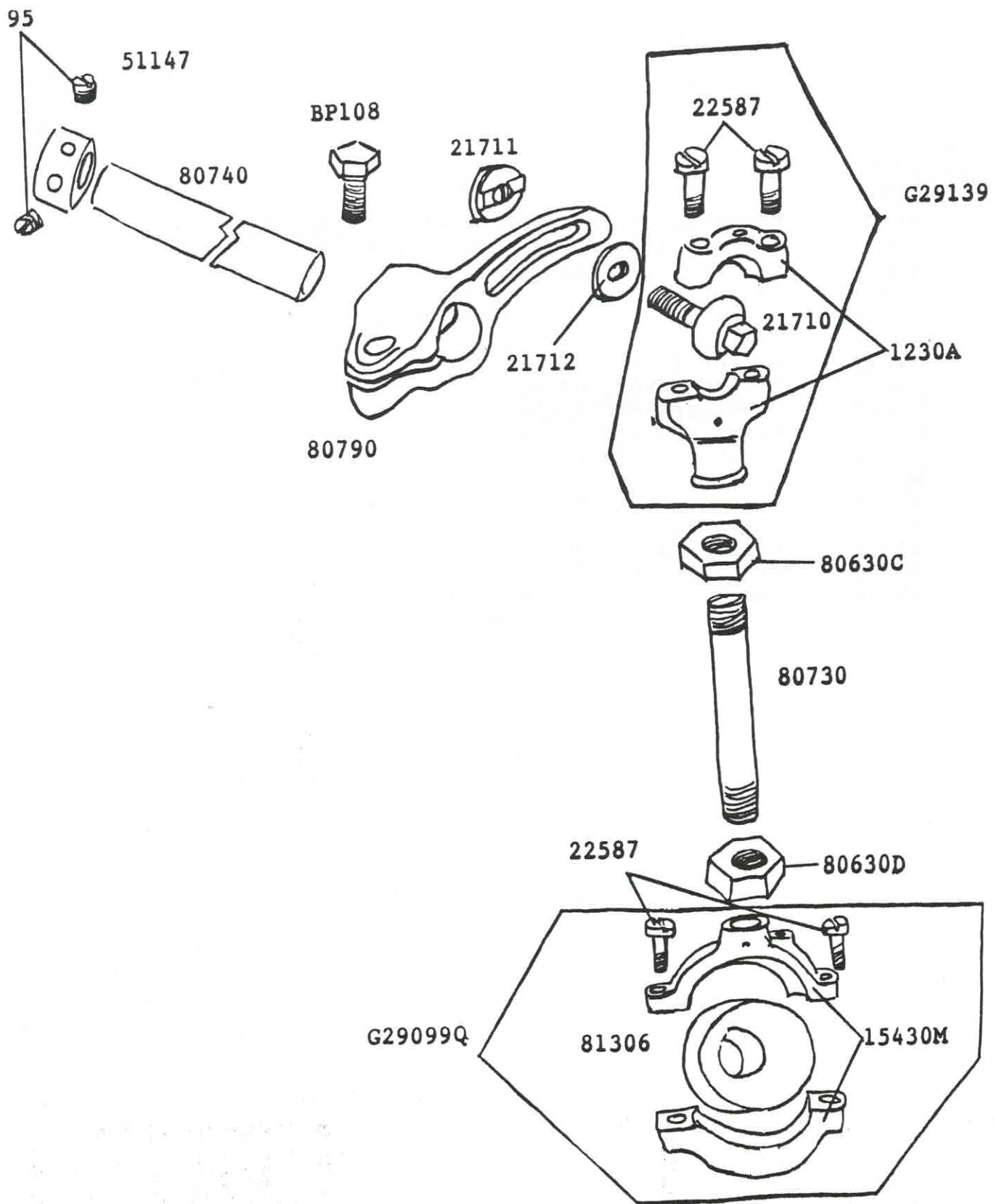


Part number	Description	Number pieces needed
79	Screw for sliding block bearing	2
HA56	Needle bar nut	1
EH330/30	Needle	1
907	Nut for guide bearing rest screw	1
11639H	Hand lifter stud	1
22707	Guide bearing rest screw	1
22882	Screw for guide bar	2
22894AD	Set screw	4
22894Y	Screw for lifter lever	2
51134V	Tapered link pin	2
80267	Lifter lever	1
80717	Needle bar	1
80732M	Guide bearing	1
80768	Sliding block bearing	1
80769	Sliding block	1
80770	Link for lifter lever	1
80771	Link for lifter lever rod	1
80774	Guide for lifter lever rod	1
80776	Stud for guide bar	1

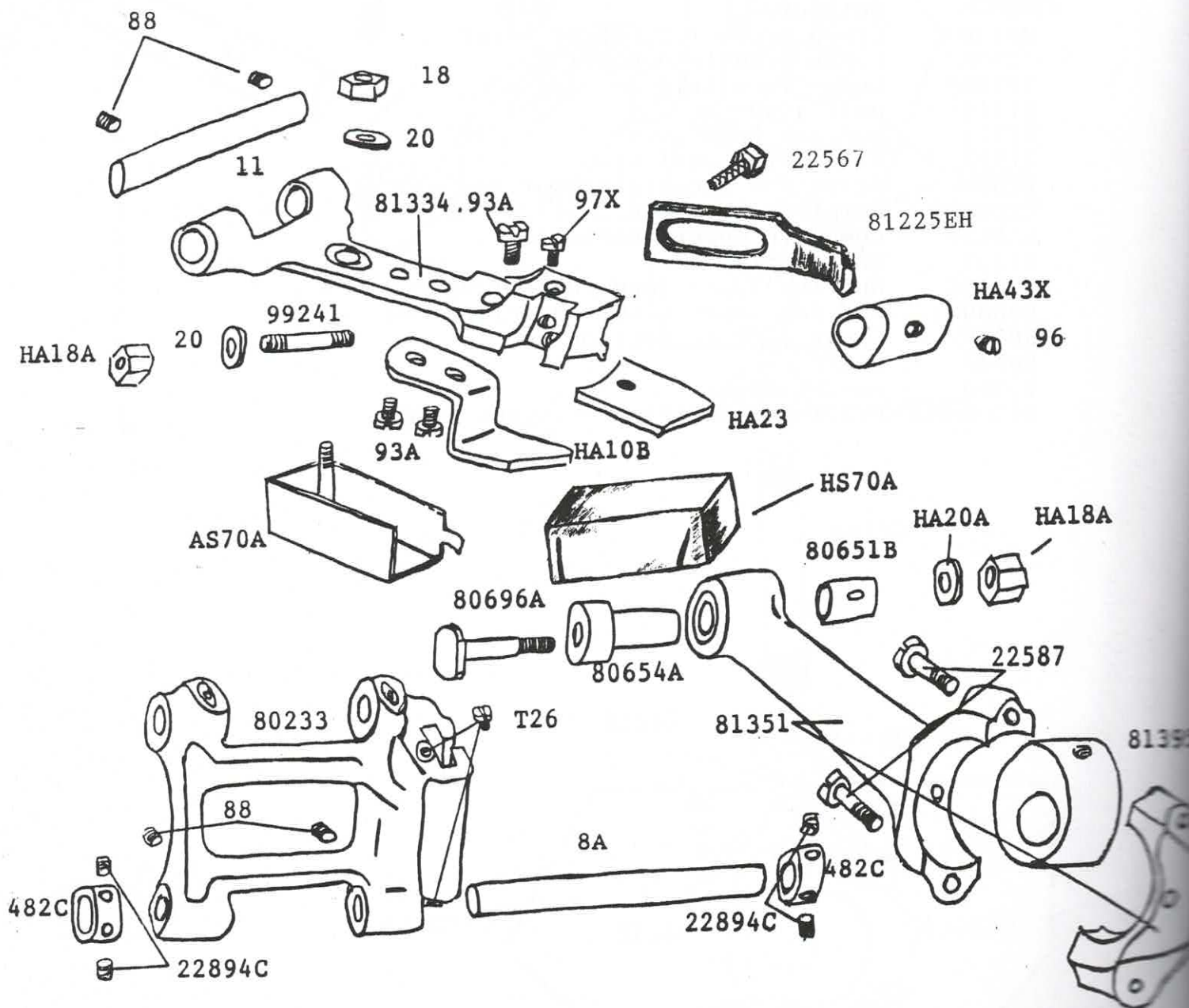


Part number	Description	Number pieces needed
94	Screw for presser bar lifter guide	4
258	Nut for lifter lever screw pin	1
420	Lifter lever stud	1
22870	Lifter lever screw pin	1
22894C	Screw for presser bar collar	2
80631	Presser bar lifter guide	2
80648	Lifter lever	1
80649	Lifter lever spring	1
80663	Upper presser spring	1
80664	Lower presser spring	1
80666D	Presser bar collar	1
80760A	Left presser bar	1
80766	Spacer for presser spring	1
80767A	Screw pin for presser spring	1
81360A	Right presser bar	1
81566A	Presser bar collar	2
99376A	Screw for presser bar collar	2



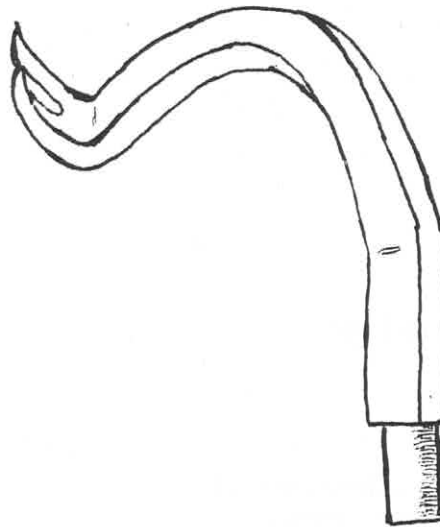


Part number	Description	Number pieces needed
95	Set screw	2
BP108	Clamp screw for rocker lever	1
1230A	Upper eccentric bearing	1
15430M	Lower eccentric bearing	1
21710	Ball stud	1
21711	Nut for ball stud	1
21712	Washer for ball stud	1
22587	Screw for eccentric bearing	4
G29099Q	Complete lower eccentric	1
G29139	Complete upper eccentric	1
51147	Shaft collar	1
80630C	Nut for upper feed connecting rod	1
80630D	Nut for upper feed connecting rod	1
80730	Upper feed connection rod	1
80740	Shaft	1
80790	Rocker lever	1
81306	Driving eccentric for upper feed	1

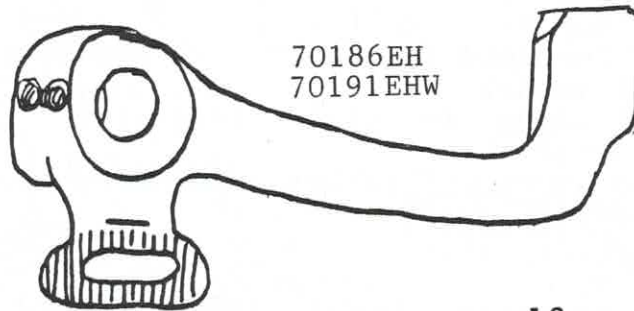
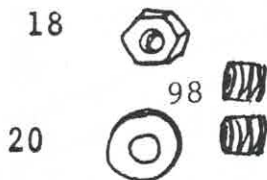


Part number	Description	Number pieces needed
8A	Feed rocker shaft	1
HA10B	Feed bar prong	1
11	Feed bar shaft	1
18	Nut for oil wick holder	1
HA18A	Nut for feed dog and stitch regulator	2
20	Flat washer	2
HA20A	Flat washer for stitch regulator	1
HA23	Feed bar shoe	1
T26	Stop screw for stitch regulating stud	2
HA43X	Feed lift cam	1
AS70A	Oil wick holder	1
HS70A	Oil wick	1
88	Set screw for feed bar shaft & feed rocker shaft	4
93A	Screw for feed bar prong and feed bar shoe	3
96	Spot screw for feed lift cam	1
97X	Screw for supporting feed dog	1
482C	Feed rocker shaft collar	2
22567	Screw for needle guard	1
22587	Screw for feed driving eccentric bearing	2
22894C	Screw for feed rocker shaft collar	4
80233	Feed rocker	1
80651B	Bushing for feed driving eccentric bearing	1
80654A	Stitch regulating stud bushing	1
80696A	Stitch regulating stud	1
81225EH	Needle guard	1
81334	Feed bar	1
81351	Feed driving eccentric connection	1
81395	Feed driving eccentric	1
99241	Stud bolt for lower feed dog	1

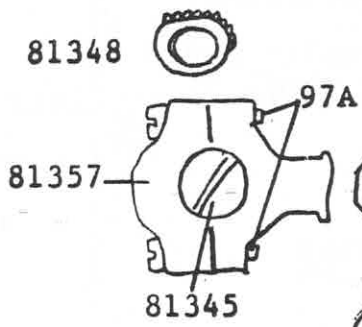
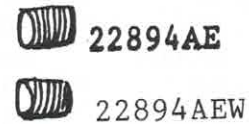




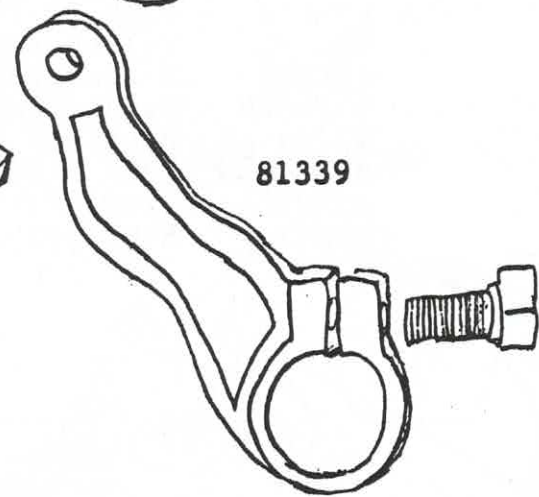
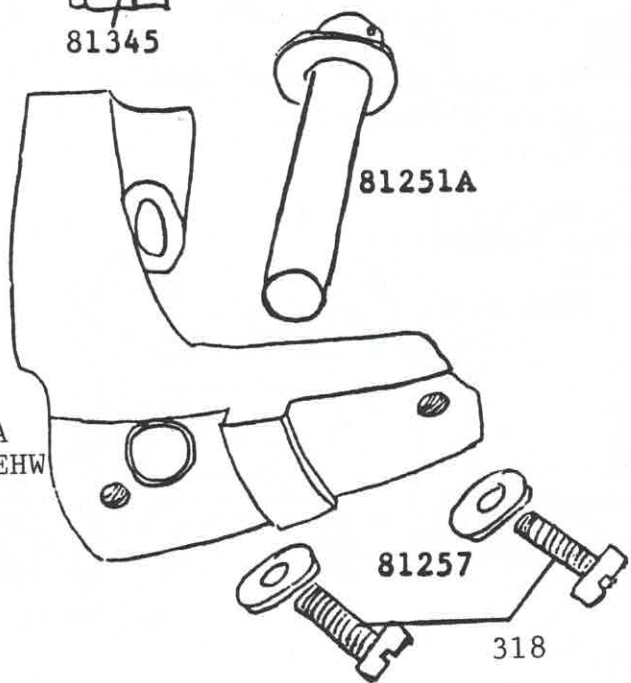
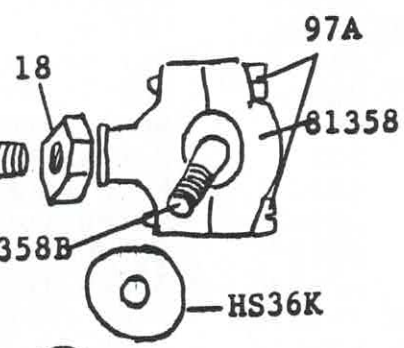
70185EH  
70190EHW



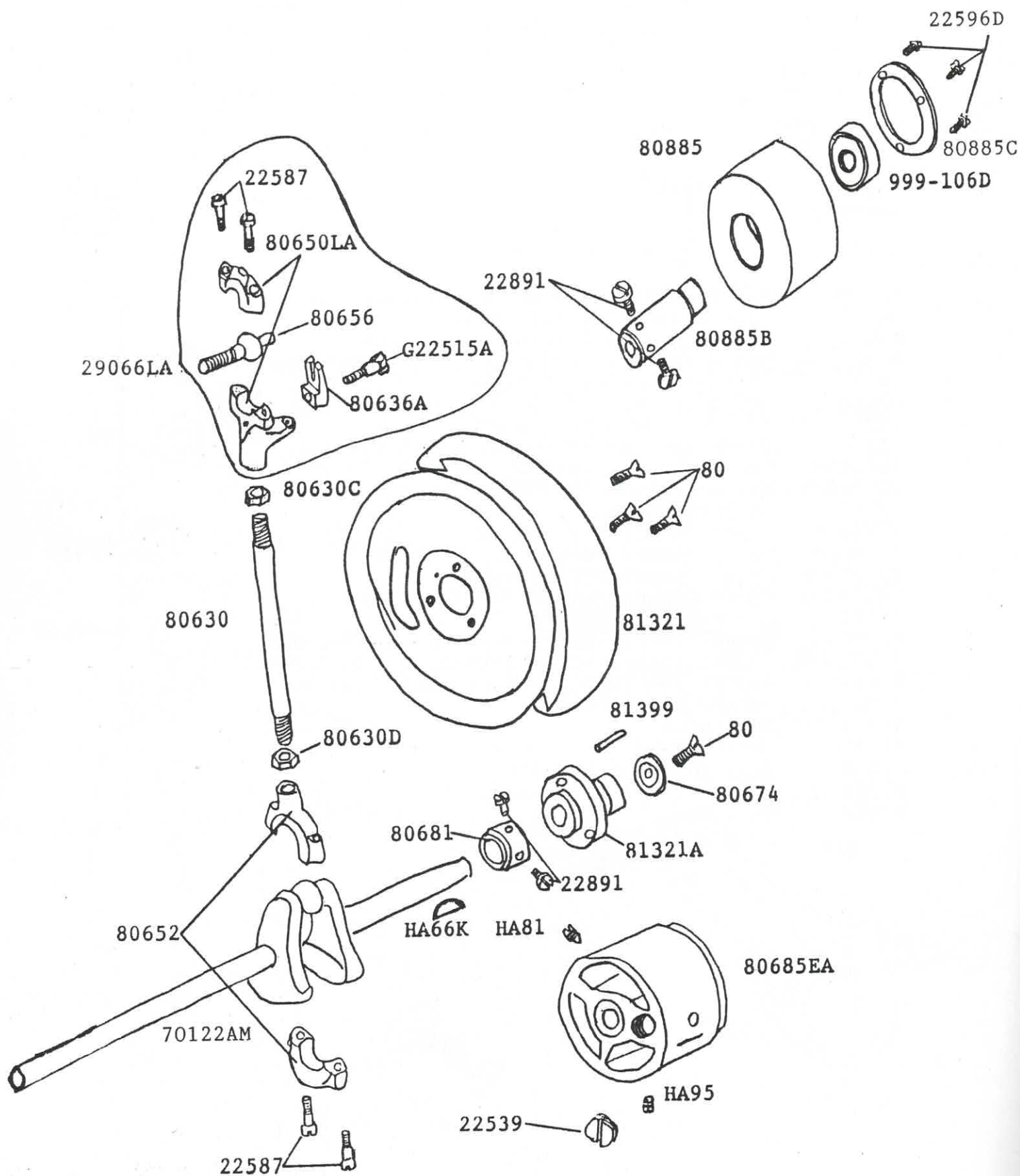
70186EH  
70191EHW



35741A

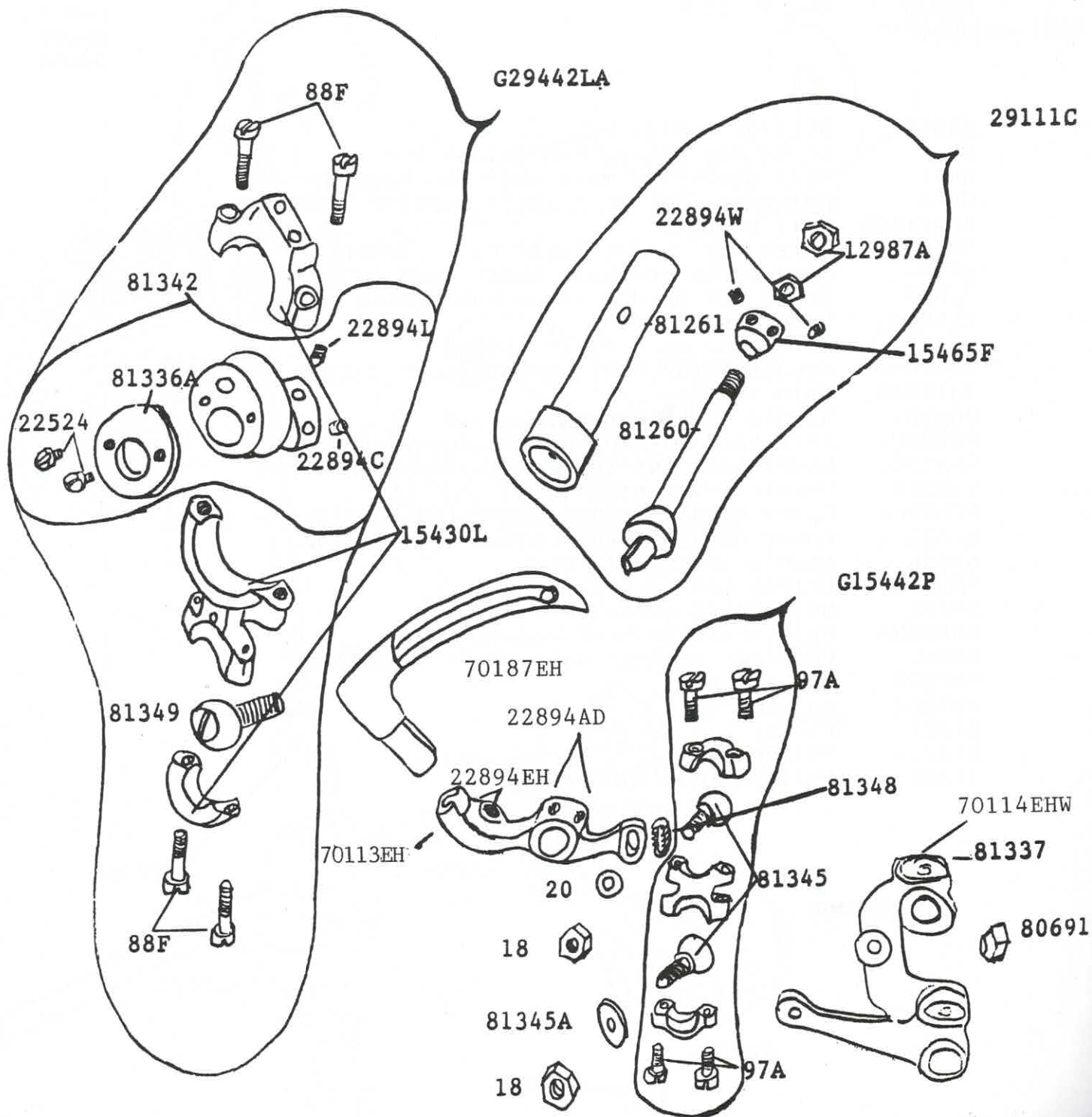


Part number	Description	Number pieces needed
18	Nut for ball stud and connecting rod	3
20	Flat washer for ball stud	1
HS36K	Washer for ball joint connection	1
97A	Screw for ball joint connection bearing	4
98	Screw for looper rocker	2
BP108	Clamp screw for looper drive lever	1
269	Nut for connecting rod	1
318	Screw for looper rocker shaft bearing	2
22894AE	Set screw for 70185EH looper	2
22894AEW	Set screw for 70190EHW looper	2
35741A	Connecting rod	1
70185EH	Upper looper for 70184EH	1
70186EH	Upper looper rocker for 70184EH	1
70190EHW	Upper looper for 70184EHW	1
70191EHW	Upper looper rocker for 70184EHW	1
81251A	Looper rocker shaft	1
81255A	Looper rocker shaft bearing for 70184EH	1
81255AEHW	Looper rocker shaft bearing for 70184EHW	1
81257	Washer for looper rocker shaft bearing	2
81339	Looper drive lever	1
81345	Ball stud	1
81348	Teeth washer	1
81357	Ball joint (left hand)	1
81358	Ball joint (right hand)	1
81358B	Ball stud	1



Part number	Description	Number pieces needed
HA66K	Key for pulley hub	1
80	Screw for pulley and pulley hub	4
HA81	Spot screw for main shaft bushing housing	1
HA95	Set screw for main shaft bushing housing	1
999-106D	Ball bearing	1
G22515A	Screw for needle lever ball stud fork	1
22539	Plug screw for main shaft bushing housing	1
22587	Screw for needle lever connecting bearing	4
22596D	Screw for holding rim	3
22891	Screw for main shaft collar	4
29066LA	Needle lever bearing complete	1
70122AM	Main shaft	1
80630	Needle lever connection rod	1
80630C	Left hand nut for needle lever conn rod	1
80630D	Right hand nut for needle lever conn rod	1
80636A	Needle lever stud fork	1
80650LA	Upper needle lever connecting bearing	1
80652	Lower needle lever connecting bearing	1
80656	Needle lever ball stud	1
80674	Pulley hub lock washer	1
80681	Main shaft collar	1
80685EA	Main shaft bushing and housing	1
80885	Housing for rear main shaft bushing	1
80885B	Hub	1
80885C	Holding ring	1
81321	Pulley rim	1
81321A	Pulley hub	1
81399	Pulley rim alignment pin	1

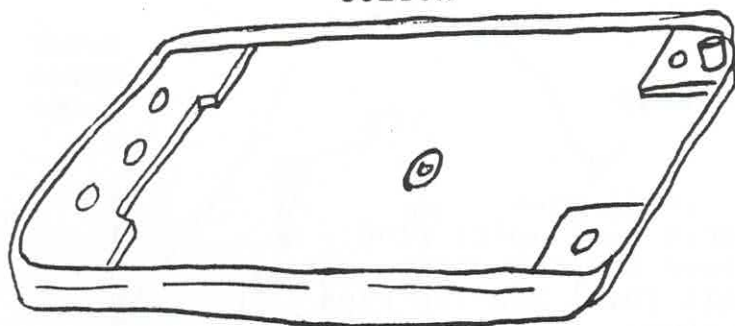






Part number	Description	Number pieces needed
18	Nut for double ball joint stud	2
20	Flat washer for double ball joint stud	1
88F	Screw for looper drive bearing caps	4
97A	Screw for double ball joint bearing caps	4
12987A	Check nut for cone stud	2
15430L	Bearing cap for looper drive eccentric assembly	1
15465F	Looper rocker cone	1
G15442P	Double ball joint	1
22524	Screw for looper drive eccentric disc	2
22894AD	Set screw for looper drive rocker	2
22894C	Set screw for looper drive eccentric	1
22894EH	Screw for bottom looper	2
22894L	Set screw	1
22894W	Set screw for looper rocker cone	2
29111C	Looper rocker cone stud assembly	1
G29442LA	Looper driving eccentric assembly	1
70113EH	Left hand looper rocker	1
70114EHW	Drive lever for 70184EHW	1
70187EH	Bottom looper	1
80691	Nut for lower looper drive lever	1
81260	Left hand looper rocker cone stud	1
81261	Left hand looper rocker cone stud bearing	1
81336A	Looper drive eccentric disc	1
81337	Drive lever for 70184EH	1
81342	Looper drive eccentric	1
81345	Ball stud for double ball joint	2
81345A	Washer for ball stud	1
81348	Teeth washer	1
81349	Looper drive eccentric connection ball stud	1

80280A



7/16 lock  
washer



21681A

81240 —



22524

81336A



81342

80236

G 29442L

81338



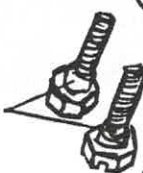
80691



81349



74A



88F



88F



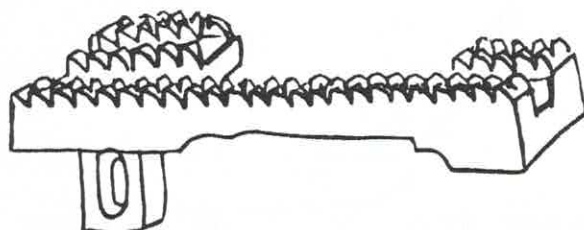
Part number	Description	Number pieces needed
7/16"	Lock Washer	2
74A	Clamp screw for looper drive lever shaft rocker	2
88F	Screw for looper drive bearing caps	4
21681A	Machine bolt	2
22524	Screw for looper drive eccentric	2
G29442L	Looper drive eccentric assembly	1
80236	Looper drive eccentric bearing	1
80280A	Base plate for machine	1
80691	Nut for lower looper drive lever	1
81240	Looper drive lever shaft	1
81336A	Looper drive eccentric disc	1
81338	Looper drive lever shaft rocker	1
81342	Looper drive eccentric	1
81349	Looper drive eccentric connection ball stud	1



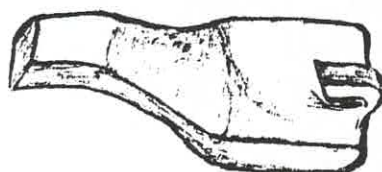
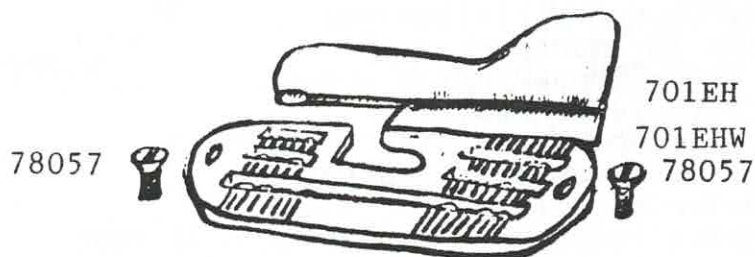
# Eagle Parts & Machinery, Inc.

P.O. Box 1464 • CHATSWORTH, GEORGIA 30705

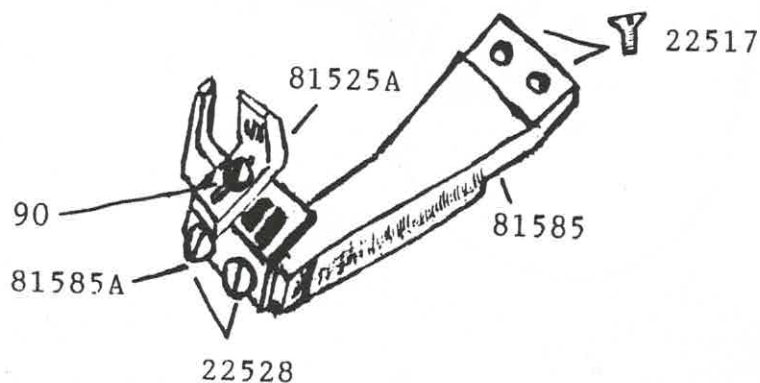
OFFICE: (706) 695-8637 FAX: (706) 695-0761



70192



Carpet Wedge

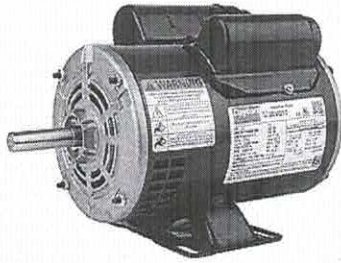


Parts number	Description	Number pieces needed
90	Needle guide screw	1
22517	Screw	2
22528	Screw	2
701EH	Throat plate for 70184EH	1
701EHW	Throat plate for 70184EHW	1
70192	Lower feed dog	1
78057	Screw for throat plate	2
81525A	Needle guard	1
81585	Needle guard	1
81585A	Needle guard	1
Carpet Wedge optional	For sewing backed carpet 3/16", 1/4", 5/16", 3/8" thickness	



# 1/2 HP General Purpose Motor,Capacitor-Start/Run,1140 Nameplate RPM,Voltage 115/208-230,Frame 56

Item # 31TR96 Mfr. Model # 119191.00 Catalog Page # 11 UNSPSC # 26101602



Web Price ⓘ

\$327.00 / each

1

Add to Cart

+ Add to List |

☒ Shipping ☐ Pickup

Expected to arrive **Tue, May 19.**

Ship To **30719** (Change)

Shipping Weight **32.35 lbs.**

Country of Origin **Mexico** | Country of Origin is subject to change.

*Note: Product availability is real-time updated and adjusted continuously. The product will be reserved for you when you complete your order. More*



How can we improve our Product Images?

☐ Compare

## Product Details

Motor complies with 2015 efficiency legislation for small-frame motors. 40°C max. ambient temperature.

## Technical Specs

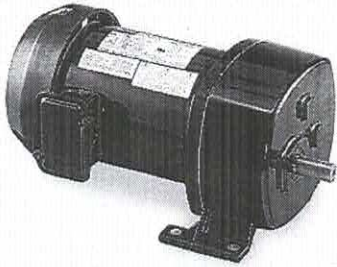
Item	General Purpose Motor
Motor Application	General Application
Motor Design	Capacitor-Start/Run
Motor Enclosure Design	Open Dripproof
HP	1/2
Nameplate RPM	1140
Frame	56
Voltage	115/208-230
Hz	60
Phase	1
Full Load Amps	5.6/3-2.8
No. of Speeds	1
Motor Mounting Type	Rigid Base
Motor Mounting Position	All Angle
Motor Thermal Protection	None
Ins. Class	B
Motor Service Factor	1.25
Motor Bearings	Ball

Motor Frame Material	Rolled Steel
Max. Ambient Temp.	40 Degrees C
Motor Shaft Rotation	CW/CCW
Shaft Dia.	5/8"
Shaft Length	1-7/8"
Length Less Shaft	9-11/16"
Overall Length	12-1/8"
Motor Shaft Design	Keyed
RPM Range	1101-1200
Standards	UL (E47479)
Duty	Continuous
Motor Efficiency Group	Premium Efficient
Nominal Efficiency	76.2%
Inverter Rated	No
Includes	Start/Run Capacitors
Manufacturers Warranty Length	1 yr.
RPM Group	1101-1200

For Butt-seamer

# AC Gearmotor 115 Nameplate RPM 137 Max. Torque 215.0 in.-lb. Enclosure TEFC

Item # 6K506 Mfr. Model # 6K506 Catalog Page # 76 UNSPSC # 26101602



Web Price ⓘ

\$753.00 / each

1

Add to Cart

+ Add to List |

☒ Shipping ☐ Pickup

Expected to arrive **Wed. May 20.**

Ship To 30719 (Change)

Jump to:

Replacement Parts

Shipping Weight **29.2 lbs.**

Country of Origin **USA** | *Country of Origin is subject to change.*

*Note: Product availability is real-time updated and adjusted continuously. The product will be reserved for you when you complete your order. [More](#)*



## CAD Downloads

Select 2D or 3D file format ▾

Download

How can we improve our Product Images?

☐ Compare

## Product Details

Dayton® Split-Phase, 115VAC, AC gearmotor delivers up to 215 in.-lb. of torque. Offers reliability and superior performance. Gear and bearing sets meet View More ▾

## Technical Specs

Item	AC Gearmotor
Gearmotor Type	AC Gearmotor
Gearmotor Voltage	115VAC
Gearmotor Phase	1
Max. Torque	215 in.-lb.
Gearmotor Shaft Type	Single
Gearmotor Shaft Orientation	Parallel
Gearmotor Rotation	CW/CCW
Nameplate RPM	137
Gearmotor Enclosure	Totally Enclosed Fan-Cooled
Gearmotor Mounting Position	All Angle
Gearmotor Brake Type	None
Length Less Shaft	12-3/4"
Hz	60
Overhung Load	325 lb.

Input HP	1/2
Gear Ratio	13:1
Full Load Amps	7.8
Thermal Protection	None
Max. Ambient Temp.	40 Degrees C
Motor Type	Split-Phase
Shaft Dia. (Dimension U)	3/4"
Shaft Length (Dimension V)	1.5"x000D_
Bearings	Heavy Duty Ball, Needle Roller and Thrust Balls on Case, Ball on Motor
Lubrication	Permanent Heavy Duty Gear Oil
Housing	Die Cast Aluminum
Gear Case Material	Die Cast Aluminum
Gears	Hardened Steel, 1st Stage Helical, Subsequent Stages Spur, AGMA Class 9
Gear Material	Hardened Steel
Gear Type	Helical First Stage/Subsequent Stages Spur/AGMA Class 9

For Trimmer

## MODEL

**4AM-RV-75-GR25**

(4 Vanes, Reversible)

Net wt. 28 lbs. (12,6 kg)

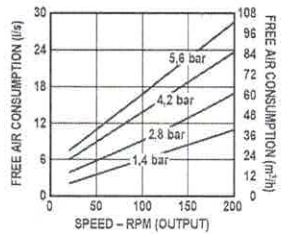
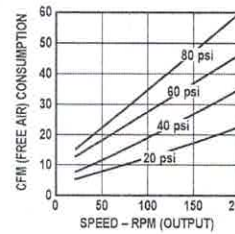
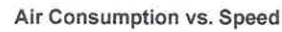
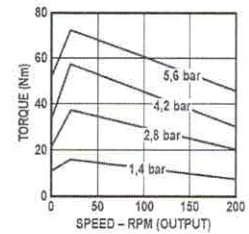
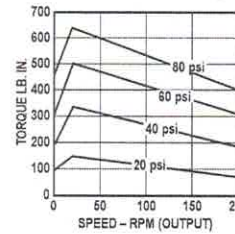
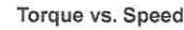
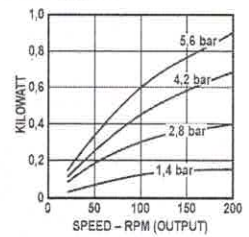
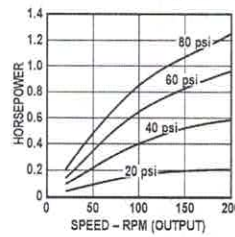
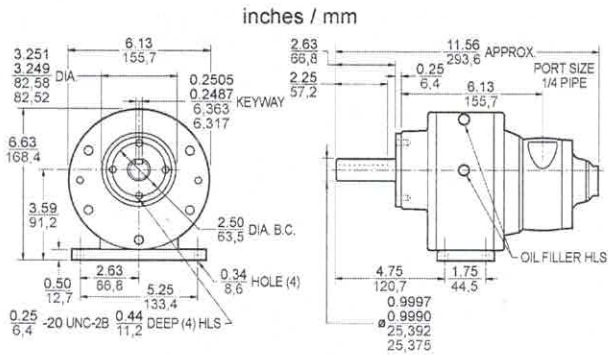
## FEATURES

- 15:1 gear reducer
- Face, foot mounting
- Horizontal or shaft down operation
- Muffler AL445 (not shown)

## RECOMMENDED

- Filter AH103F
- Regulator AH104R
- Gauge AA806
- Lubricator AH105L
- Oil AD220 – 1 quart (.94 litres)
- Repair kit K205 (Air motor only)

Max. allowable end thrust with 0 overhung load ranges from 250 lbs. (112,5 kg) at 200 rpm to 800 lbs. (360,0 kg) at 20 rpm. Max. overhung load with 0 end thrust ranges from 200 lbs. (90,0 kg) at 200 rpm to 600 lbs. (270,0 kg) at 20 rpm. Max. recommended pressures to 80 psi (5,6 bar).



For Buttseamer

## MODEL

**6AM-FRV-5A** (4 Vanes, Reversible)

**6AM-FRV-23A** (8 Vanes, Reversible)

Net wt. 21 lbs. (9,5 kg)

## FEATURES

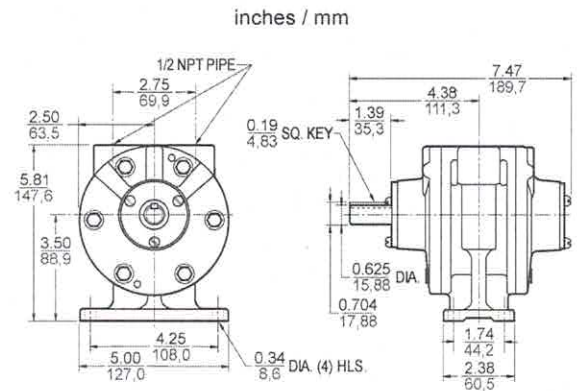
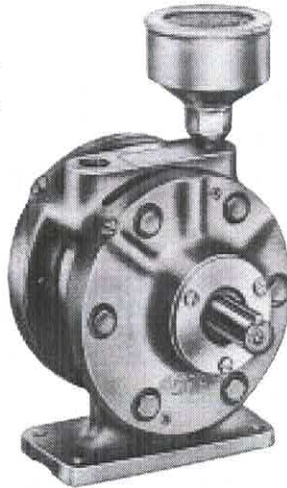
- Foot mounting
- Any plane operation
- Muffler AC990

## RECOMMENDED

- Filter AH106F
- Regulator AH107R
- Gauge AA806
- Lubricator AH108L
- Oil AD220 – 1 quart (.94 litres)
- Repair kit K208 (4 Vane)
- Repair kit K281 (8 Vane)

OPTIONAL

- Muffler AL476 (for additional noise reduction)



For Trimmer